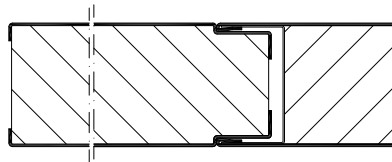
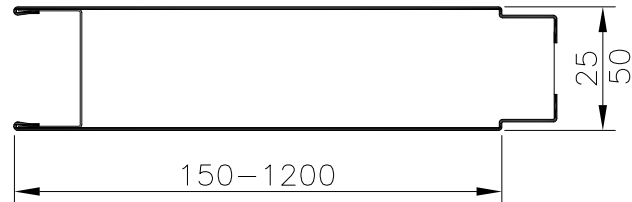
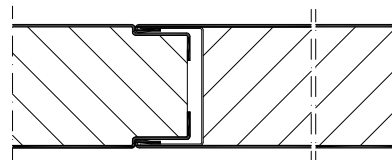
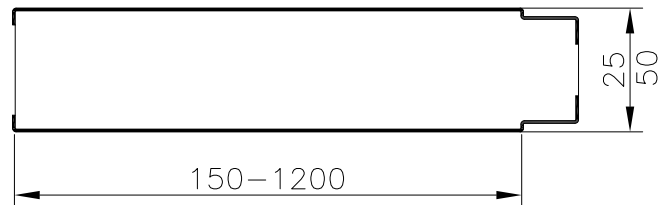


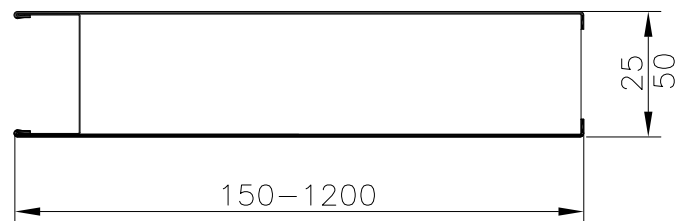
**PA 25 S / PA 50 S**



**PA 25 SF / PA 50 SF**



**PA 25 SM / PA 50 SM**

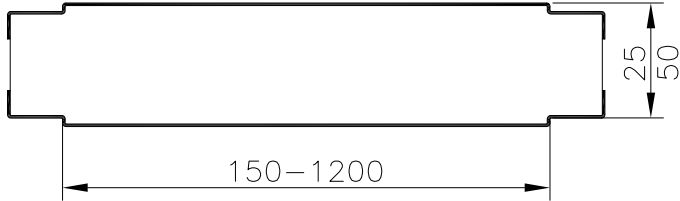


PANEL	PA 25	PA 50	Core material
Fire class	B-15	B-15	Material: mineral wool
Standard width	600 mm	600 mm	Surface material
Module width	150-1200 mm*	150-1200 mm*	Material: galvanized steel sheet, stainless steel sheet
Module length	up to 2700 mm	up to 2700 mm	Coating: PVC film, RAL
Thickness	25 mm	50 mm	Fire class: low flame spread surface class1
Sound red. ( $R_w$ ) / weight	33 dB/14,3 kg/m <sup>2</sup>	36 dB/19 kg/m <sup>2</sup>	
Application	lining/partition	lining/partition	

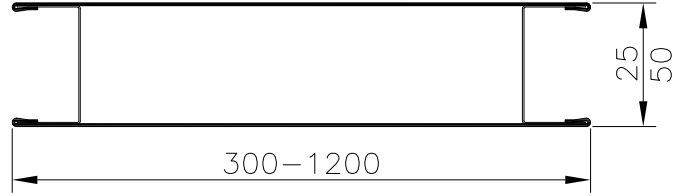
\* For more information, please, contact us.

Our products are produced according to our projects and documentation or customer's specification.

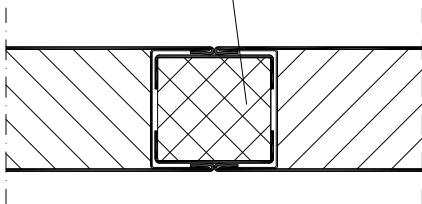
**PA 25 R / PA 50 R**



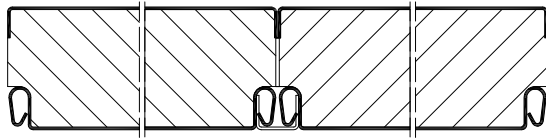
**PA 25 A / PA 50 A**



**PA 25 / 50 AC**

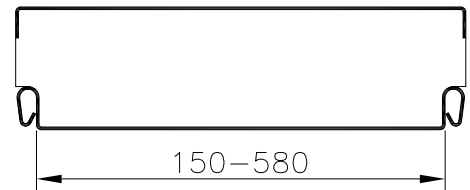


**PA 25 AC / PA 50 AC**

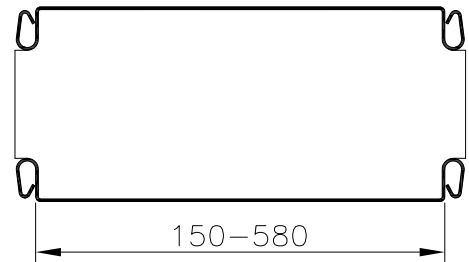


**PA - Z**

**PA 25 Z \***



**PA 50 Z \***



PANEL	PA 25	PA 50	Core material
Fire class	B-15	B-15	Material: mineral wool
Standard width	600 mm	600 mm	Surface material
Module width	150-1200 mm*	150-1200 mm*	Material: galvanized steel sheet, stainless steel sheet
Module length	up to 2700 mm	up to 2700 mm	Coating: PVC film, RAL
Thickness	25 mm	50 mm	Fire class: low flame spread surface class1
Sound red. (R <sub>w</sub> ) / weight	33 dB/14,3 kg/m <sup>2</sup>	36 dB/19 kg/m <sup>2</sup>	
Application	lining/partition	lining/partition	

\* For more information, please, contact us.

Our products are produced according to our projects and documentation or customer's specification.