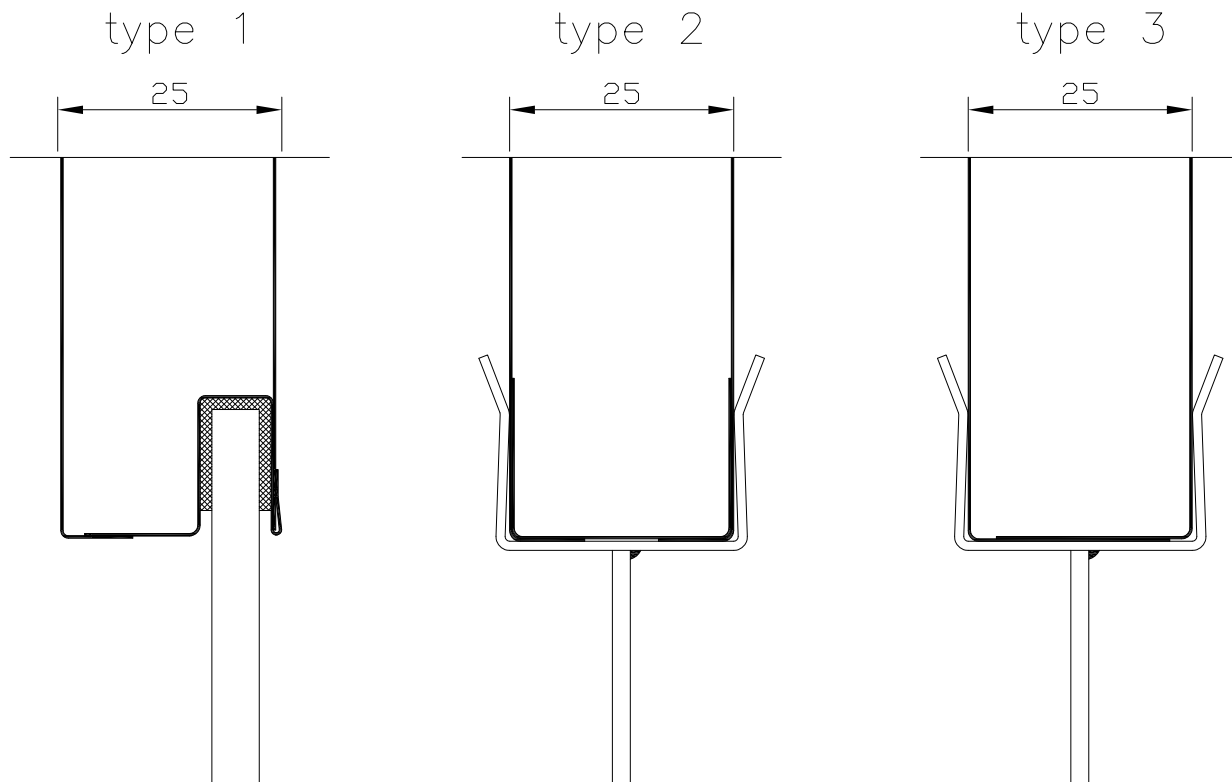
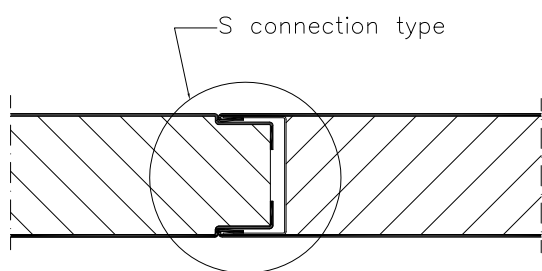


(x) - types of connections:
S, SF, SM, R, A

PA 25(x) WET*



* Drawn coaming is not a part of a regular offer. For more information, please, contact us.



Note:
Panels PA25(x) WET can also be used as 2x PA25(x) WET acoustic panels with $R_w = 47\text{dB}$

PANEL	PA 25(x) WET		Core material
Fire class	B-15		Material: mineral wool
Standard width	600 mm		Surface material
Module width	150-1200 mm*		Material: galvanized steel sheet, stainless steel sheet
Module length	up to 2700 mm		Coating: PVC film, RAL
Thickness	25 mm		Fire class: low flame spread surface class1
Sound red. (R_w) / weight	33 dB/15 kg/m^2		
Application	lining/partition		

* For more information, please, contact us.

Our products are produced according to our projects and documentation or customer's specification.